

LAKE COUNTY HISTORICAL SOCIETY

Schreckengost Exhibit

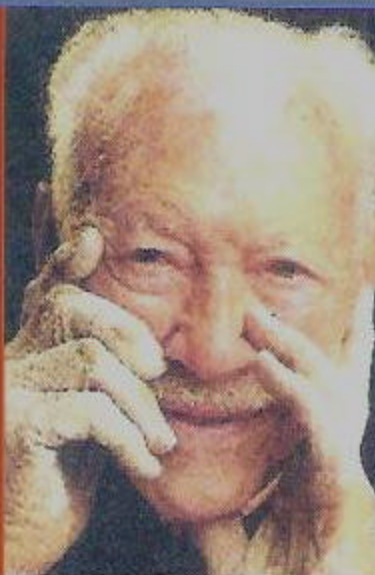
May 22 – Oct. 31, 2010
at the Lake County
History Center,
works by Viktor
Schreckengost,
The American DaVinci ...

- Murray Pedal Cars
- Madonna sculpture
- Replicated Jazz Bowl

Also never before seen
works and personal
items of Nadine Averill
Schreckengost.

- Oil Paintings
- Drawings
- Family Photos
- Blueprints of their
dream home

WIN a Schreckengost
Signed Print –
“Entrance to the City”.
Tickets available at the
History Center.



www.LakeHistory.org

Viktor and Nadine Schreckengost Exhibit

Visit the Lake County History Center's exhibit of Viktor's life-long achievements, coupled with his personal life with first wife, Nadine Averill Schreckengost. "An Intimate Portrait" explores the life Vik and Nadine shared for forty years, a side of Viktor never before presented to the public. Nadine was an artist and graduate of Cleveland School of Art (now C.I.A.), whose Averill family came from Lake County. Averill heirlooms are also on display. Exhibit runs May 22nd through October 31st 2010.



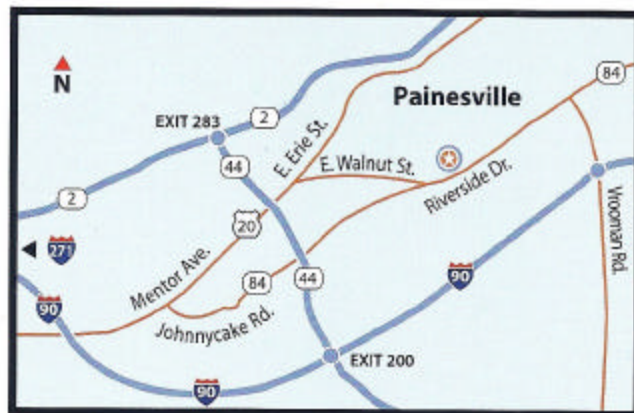
Museum Hours: Open Tues. Wed. Thurs. 10am-3pm.
Sat. 10am-2pm. Sun. 1-4pm. Members Free. Admission \$3.
Children under 10 Free. Wednesdays Free.
Please call for Special Group Rates. Free Parking

Directions to the Lake County History Center

East or west on State Route 2. Take Exit 283 to State Route 44 south to SR 84 (Johnnycake Rd.), east to E. Walnut St., right onto Riverside Dr.

East on I-90. Take Exit 200 to State Route 44, north to State Route 84 (Johnnycake Rd.), east to E. Walnut St., right onto Riverside Dr.

West on I-90. Take Vrooman Rd. north to Route 84 (Riverside Dr.), left on Riverside Dr.



Lake County History Center Museum & Village

Lake County Historical Society
415 Riverside Drive
Painesville Township, OH 44077
(Ph): 440-639-2945
www.LakeHistory.org

